

# MAINTENANCE BOOK FOR ESCAPE DOORS

## INITIAL OPERATION

Date	
Installer	
Customer	

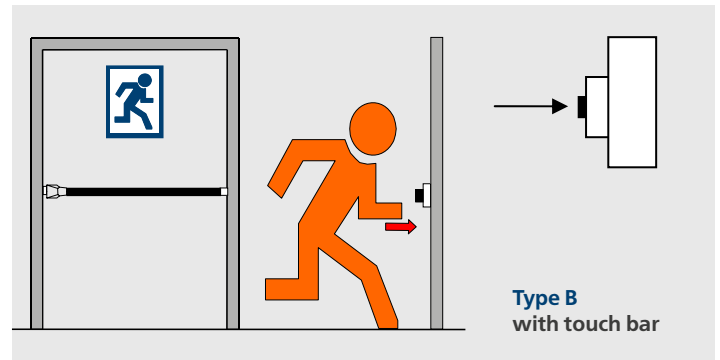
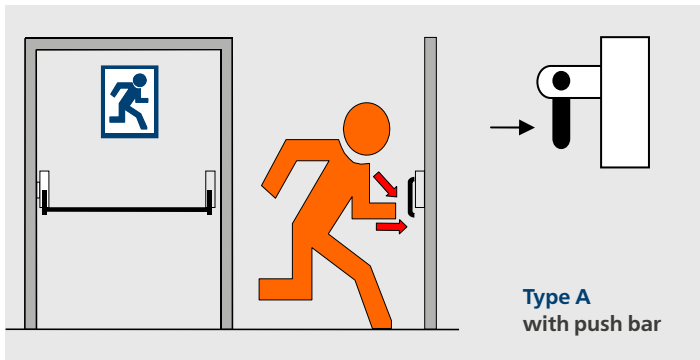
Door location	
Product	<input type="checkbox"/> Panic exit hardware according to EN 1125
	<input type="checkbox"/> Emergency exit hardware according to EN 179

## MEASUREMENT OF RELEASE FORCES

	Result 1	Result 2	Result 3
Active leaf			
Passive leaf			

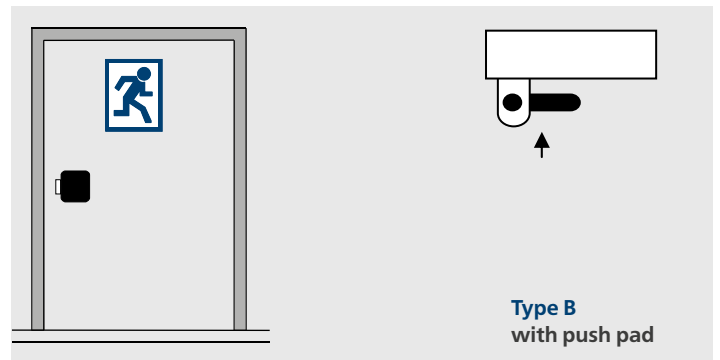
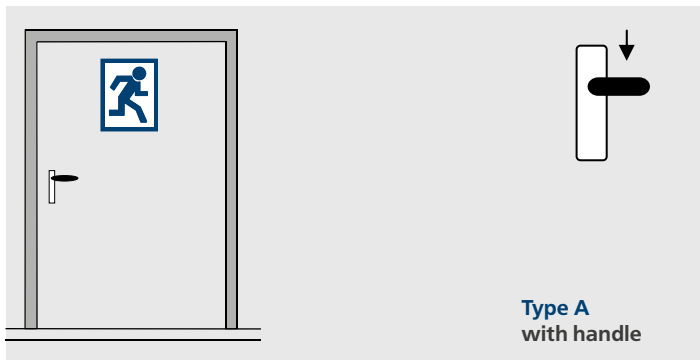
## PANIC EXIT HARDWARE ACCORDING TO EN 1125

Determination of the release forces in N using a force gauge in the direction of the arrow



## EMERGENCY EXIT HARDWARE ACCORDING TO EN 179

Determination of the release forces in N using a force gauge in the direction of the arrow



## CHECK LIST

Check of the panic or emergency opening function.	<input type="checkbox"/>
Check counterparts such as floor recesses for dirt and clean if necessary.	<input type="checkbox"/>
Installation has been carried out in accordance with the manufacturer's installation instructions.	<input type="checkbox"/>
The lock is lubricated according to the manufacturer's instructions.	<input type="checkbox"/>
No subsequent changes such as the subsequent installation of additional locking devices.	<input type="checkbox"/>
All components of the system also comply with the list of approved components originally supplied with the system.	<input type="checkbox"/>
No loosening of fixing screws of the fittings.	<input type="checkbox"/>

# PERIODIC MAINTENANCES

## MAINTENANCES

Customer	

Product	<input type="checkbox"/>	Panic exit hardware according to EN 1125
	<input type="checkbox"/>	Emergency exit hardware according to EN 179

## RECOMMENDED MAINTENANCE INTERVALS

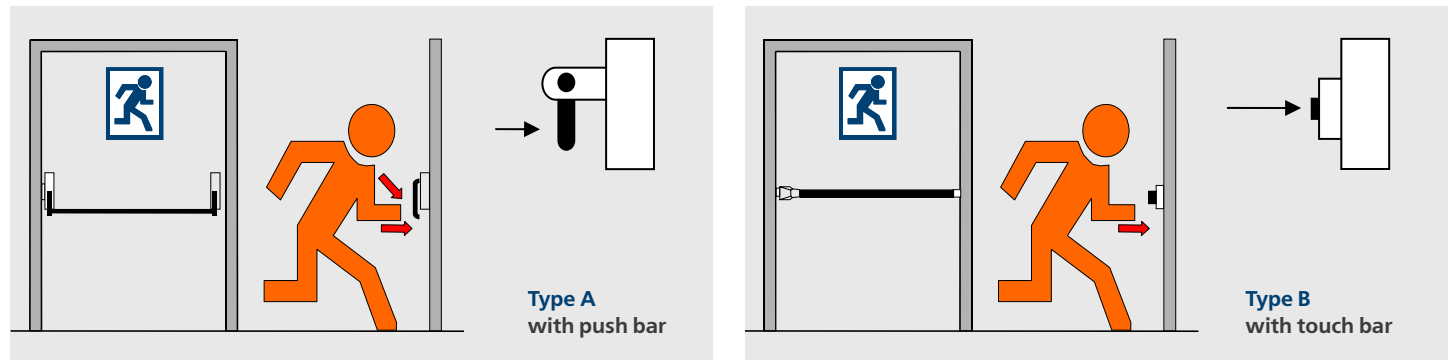
Depending on the frequency of use, maintenance must be carried out at least monthly, but at the latest after approx. 20,000 actuation cycles.

## MEASUREMENT OF RELEASE FORCES

Please enter the determined values in the list on the following pages.

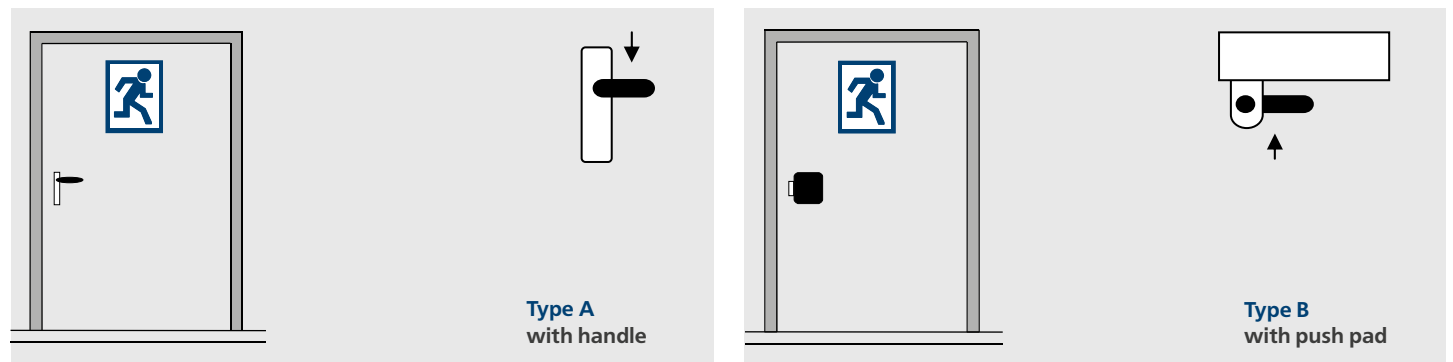
### PANIC EXIT HARDWARE ACCORDING TO EN 1125

Determination of the release forces in N using a force gauge in the direction of the arrow



### EMERGENCY EXIT HARDWARE ACCORDING TO EN 179

Determination of the release forces in N using a force gauge in the direction of the arrow



## CHECK LIST

Check of the panic or emergency opening function.	<input type="checkbox"/>
Check counterparts such as floor recesses for dirt and clean if necessary.	<input type="checkbox"/>
Installation has been carried out in accordance with the manufacturer's installation instructions.	<input type="checkbox"/>
The lock is lubricated according to the manufacturer's instructions.	<input type="checkbox"/>
No subsequent changes such as the subsequent installation of additional locking devices.	<input type="checkbox"/>
All components of the system also comply with the list of approved components originally supplied with the system.	<input type="checkbox"/>
No loosening of fixing screws of the fittings.	<input type="checkbox"/>



